

The true manufacturer of eyelash glues

The true leader of eyelash extensions items

The true supporter of cosmetic beauty products

**T r u s t   u s   a n d   J o i n   u s**

**S E O U L L A S H**

A Message from  
Chairman

In the year of 2008, We were born with the beauty of spring in Seoul city. Without your continuous support and trust consistently have been giving to us for more than ten years, We wouldn't be here today. We are very grateful to you and now we prepared our new upgrade for our continuous cooperation.

First, We have more families in recent years. We hired great people in each fields that R&D, Production, Marketing and etc. So, we can help our customers to be more efficiently, passionately and perfectly.

Secondly, We have a new friends & partners for cosmetic products. We have 4 partners who can provide high quality raw materials of ingredients, various bottles and perfect recipes of cosmetics. So, you can enjoy high quality cosmetic products on your brand.

Thirdly, we expanded our production line further. In the past, many customers had to wait for a long time for their production. But, from now on it will be not necessary. We have more than double production lines than before . It was requiring us a lot of investment, but it was a easy decision for us. Because, we know that you and our time are very precious.

Now, we are ready to begin a new journey for a new and wonderful leap with you in the future and I'm so glad with this. Please join to us !!

Gil-Ja, Lee  
Founder & Chairman of  
SEOUL LASH Group

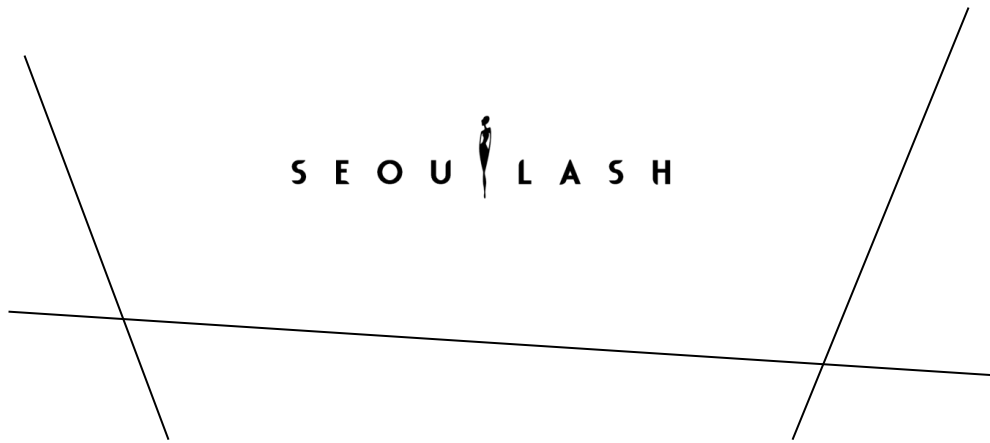
S E O U  L A S H

- 
- 
- EYELASH EXTENSION GLUES
  - EYELASH GLUE REMOVERS
  - PRE - TREATMENT PRODUCTS
  - AFTER - CARE PRODUCTS
  - EYELASH EXTENSION EYE - PATCHES
  - FALSE INDIVIDUAL EYELASHES
  - BEAUTY PRODUCT DEVELOPMENT : OEM/ODM
  - C P N P CERTIFICATION CONSULTING
  - ABOUT US & CONTACT US

THE EYELASH EXTENSION GLUES



SEOULASH



# The eyelash glues for perfect eyelash extension

**We will design high-level glues  
through comprehensive planning of ODM  
to suit your needs and brand concepts  
with various glue bottles and packages**

Manufacturing for perfect eyelash glues  
our senior engineers are constantly testing  
& developing for new recipes every days

Our customers can enjoy various  
unique eyelash glues for their brand

## **Color & Scent**

Pink, Blue, Purple, Transparent & Rose, Fruit, Honey and etc  
Do express your brand in a variety of colors & scents

## **Flexibility**

The flexible glue is shock-resistant by emphasizing  
flexibility that helping the glue's stability

## **Retention**

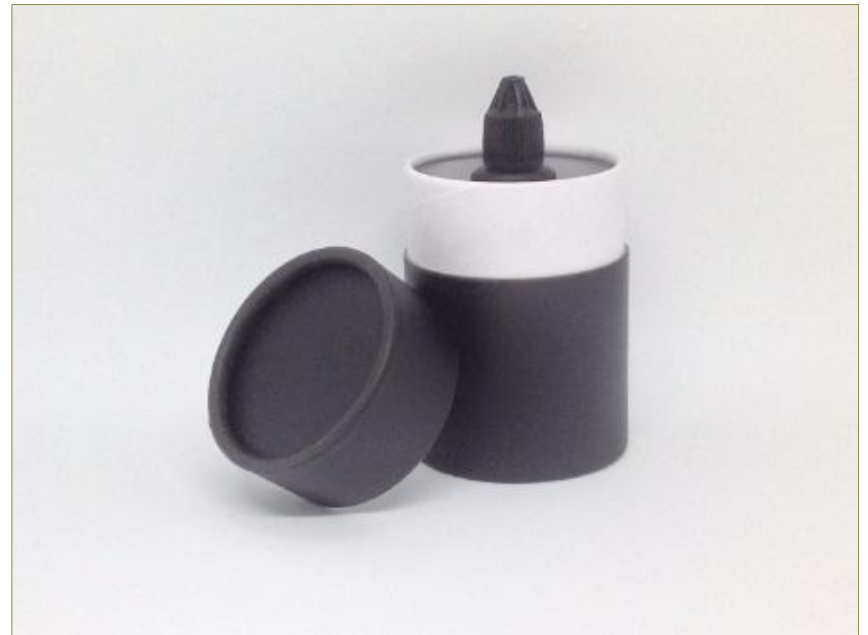
Retention type can increase customer satisfaction  
who want to have the longest retention power of eyelashes

## **Safety**

Ultra-low irritation type of eyelash glue  
for customers who are sensitive to glue stimulation.



**DESIGNING & CONSULTING**  
**: CAP, BOTTLE, INGREDIENTS and etc**



You can match up with many different types of bottles, caps and packages

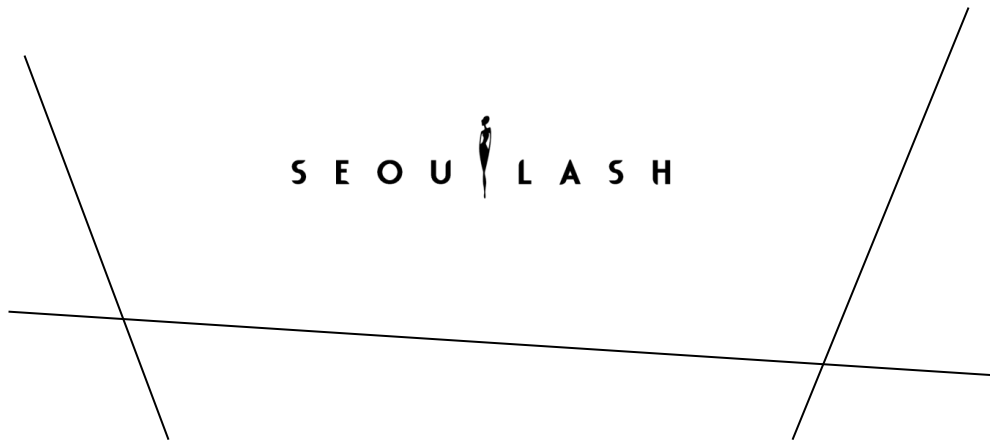


【 Concept example picture 】

THE EYELASH GLUE REMOVERS



S E O U  L A S H





# Gel remover

Gel type of removers are made by thick gel formula that can remove quickly eyelash extension glues. It is suitable for removing partial extension lashes without harming natural eyelashes.

- **Various color & scent options**
- **Strong removing power**
- **Fastest removal ability**



# Cream remover



Cream type of removers are made by cream formula that can safely removes the extension glues. It is suitable for removing entire set of extension lashes without negatively affecting natural eyelashes.

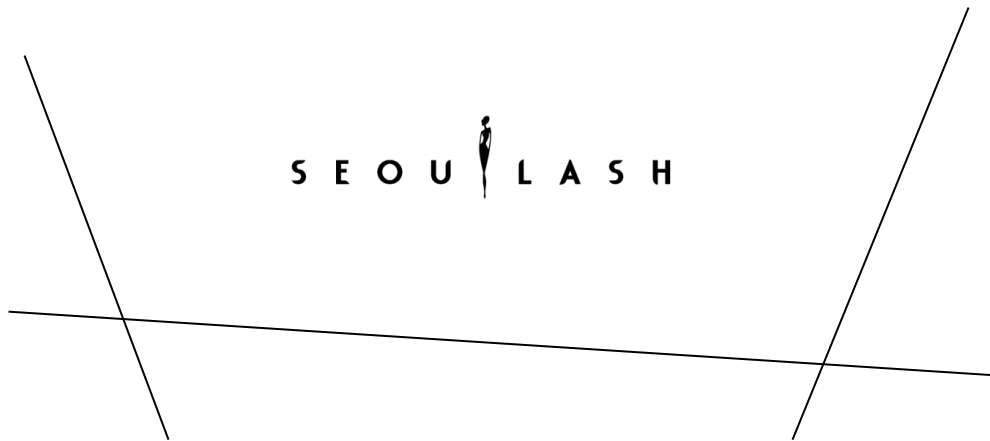
- **Various color & scent options**
- **Strong removing power**
- **Safetest removal ability**



THE PRE-TREATMENT PRODUCTS



SEOULASH





---

### **Eyelash accelerator**

Eyelash accelerator can make the glue work faster and the retention power to be longer. It is suitable for slow glues and proficient experts.



---

### **Eyelash cleanser**

Eyelash cleanser can eliminate dirt, oils, residues and around your eyes. It is suitable for both lash extensions and natural lashes.



---

### **Eye make-up remover**

Eye-make up remover is one of the pre-treatment product. It removes all of the make-up and some of foreign substance that might irritate the sensitive skin on the around eyelashes.



---

### **Protein remover**

Protein remover is one of the pre-treatment product. It can remove proteins, oils, dusts and etc on the around eyelashes.

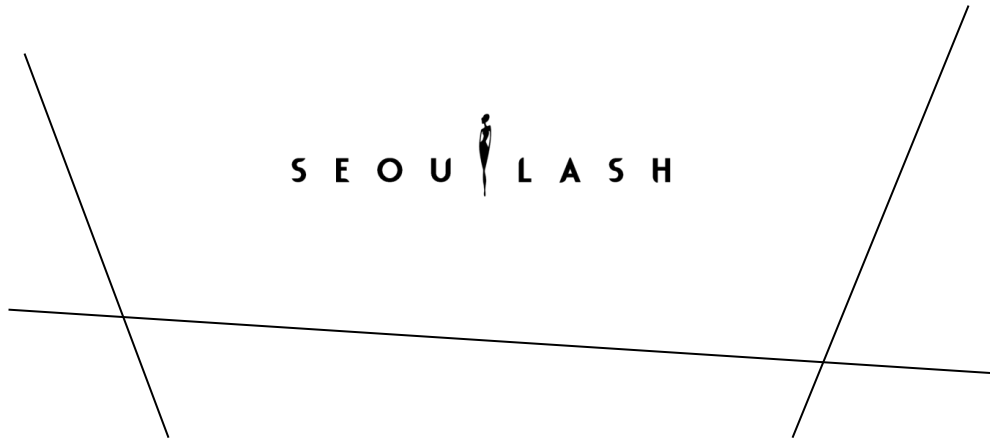


【 Bottle example pictures 】

THE AFTER-CARE PRODUCTS



S E O U  L A S H







**Eyelash growth serum**

**Eyelash growth serum**

Eyelash growth serum can enhance your eyelashes growth effectively your eyelashes growth. It can help repair damaged lashes by nourishing and moisturizing it



**Eyelash coating**

**Eyelash coating**

This product can use to protect eyelash extensions from elements that break down the eyelash extension bond life.

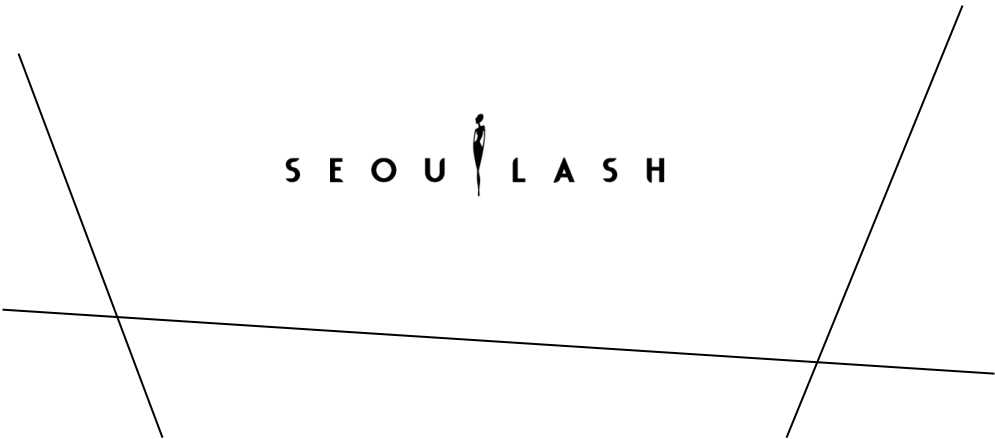


【 Bottle example pictures 】

EYELASH EYE-PATCHES



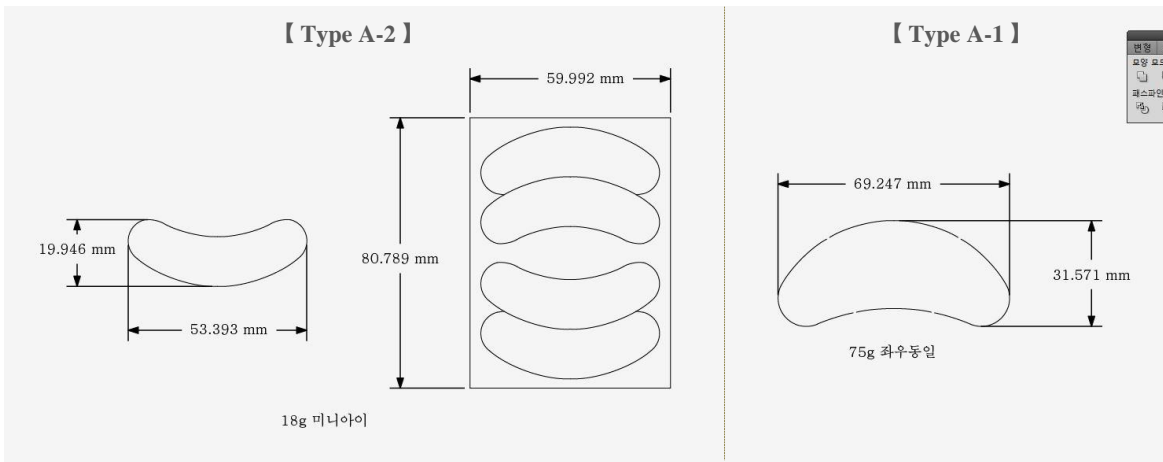
S E O U  L A S H





## The eye-patches Lint free & Hydro-gel

Eye-patches can improve wrinkles, dark circles and puffiness around the eyes and It also provide a more soothing and relaxing experience than using a tape alone when doing the eyelash extensions.

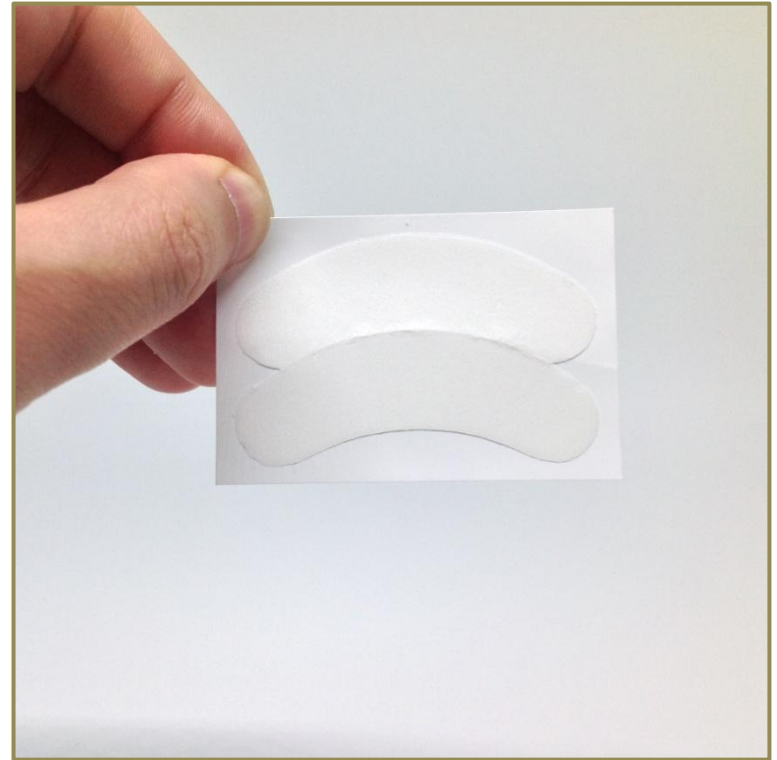
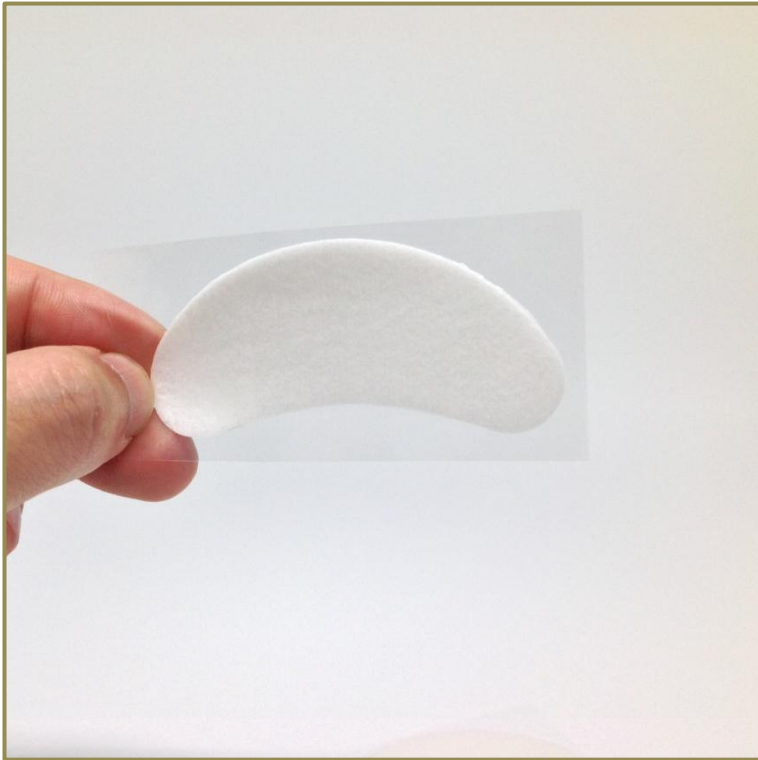


### Type A-1

- 2 pairs
- Large size
- Lint free

### Type A-2

- 4 pairs
- Small size
- Lint free

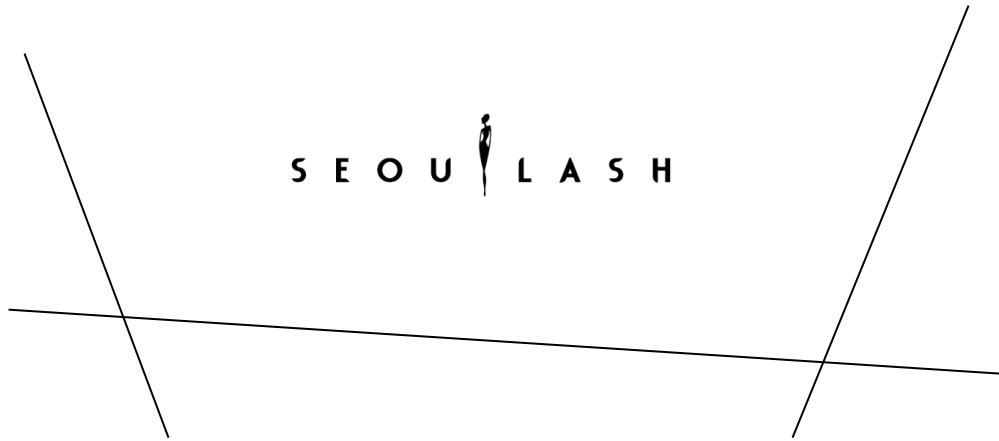


【 Example picture 】

THE FALSE INDIVIDUAL EYELASHES

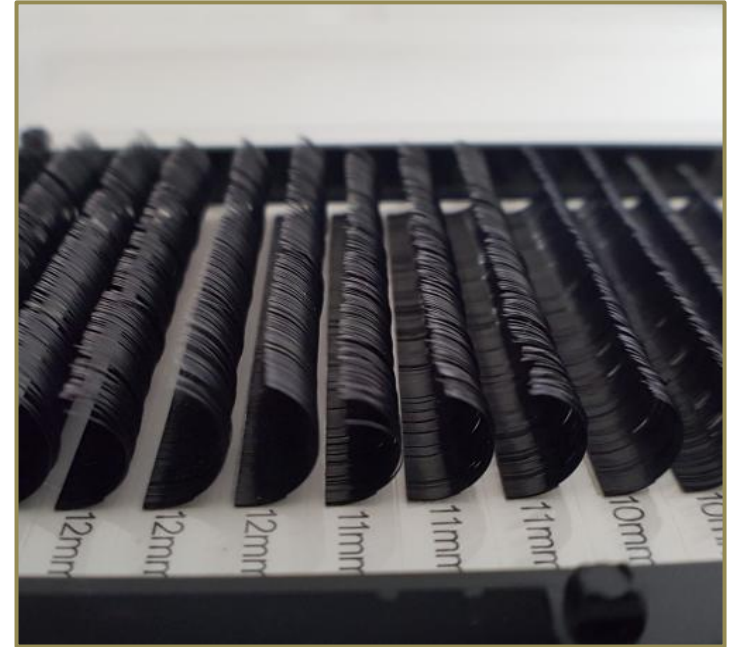


S E O U  L A S H



# The false-eyelashes by

High quality Korean Synthetic raw-materials

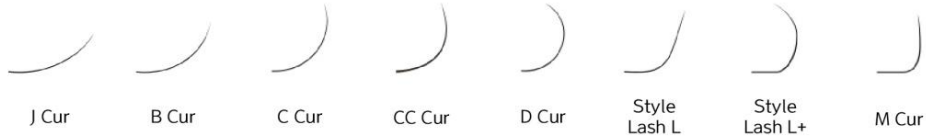


Providing various types of Curl, Length, Thickness  
always use high quality Korean synthetic materials

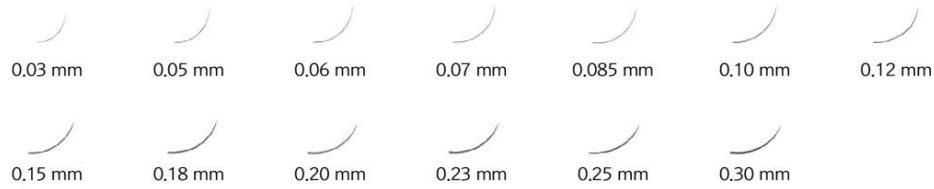
Numerous colors and a wide selection of option are  
awaiting for your brand business

## Curl Spec

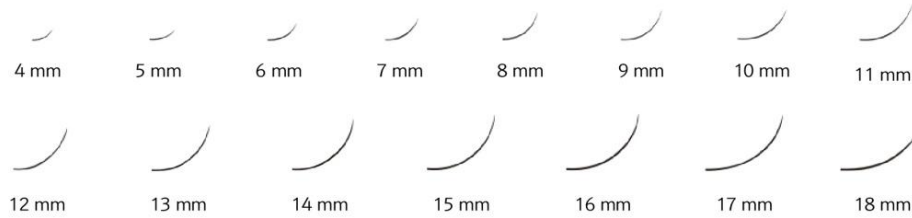
### Curl



### Thickness



### Length



## Eyelash Color Information

### Solid Color



### Two tone Color



## OPTIONS

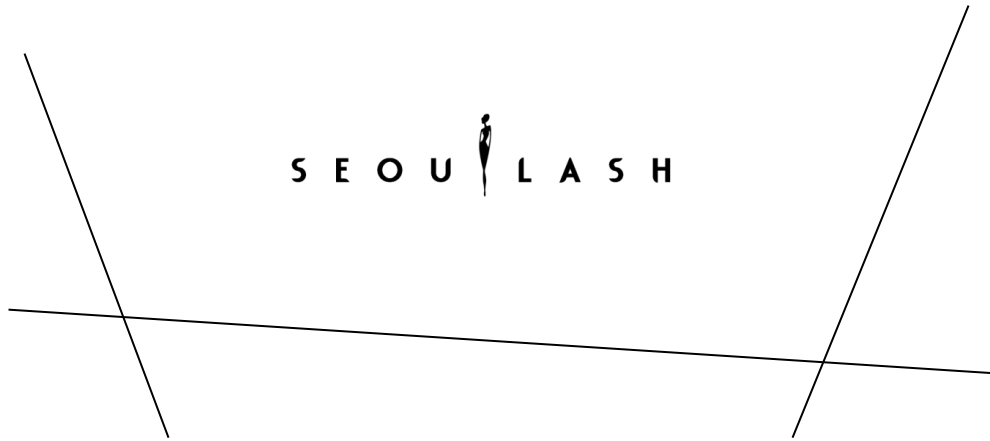
- Curl / Length / Thickness
- Mink / Silk / Flat
- Solid color / Two tone color
- 2D ~ 6D
- Glitter
- Case
- Private label



BEAUTY PRODUCT DEVELOPMENT & C P N P



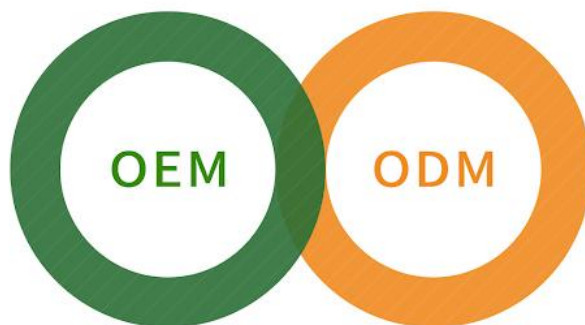
SEOULASH



# Chemical beauty products development of OEM/ODM

As well as eyelash extension products, we has a lot of experience and know-how to manufacture various beauty products including basic skin cosmetics and etc.

Starting with the product concept, professional manpower is placed in every position you need, such as researching and arranging raw materials, making and purchasing mold of bottles & packing, raw materials and others



BEAUTY PRODUCTS CONSULTING REQUEST



EXPECTED ESTIMATE INVESTIGATION & INFORM



CONTRACT



PRODUCT DEVELOPMENT AND  
SAMPLE CONFIRMATION



PURCHASE OF RAW MATERIALS AND  
PACKING MATERIALS



MANUFACTURING AND SHIPPING

# Supporting **CPNP** as a your true manufacturer

CPNP (Cosmetic Product Notification Portal) is an online registration system applied to all cosmetics that distributed and sold in Europe.

We can help and consult for the whole process of CPNP as a manufacturer or assistant.

We do your CPNP in cooperation with a highly trusted local company (RP: Responsible Person) in Europe



**Increase and prove your brand value through CPNP**





A  
B  
O  
U  
T

U  
S



## Web-site

---

WWW . SEOULLASH . COM



TEL & Whatsapp  
E-mail

+ 82-10-2924-8717  
[seoullash@naver.com](mailto:seoullash@naver.com)

## Office

---

### # MAIN OFFICE in South Korea

401, 457, Baekbeom-ro, Namdong-gu,  
Incheon, Republic of Korea

### # CHINA OFFICE

中国湖北省襄阳市襄州区航空路百洋欧典3号楼

## Factory

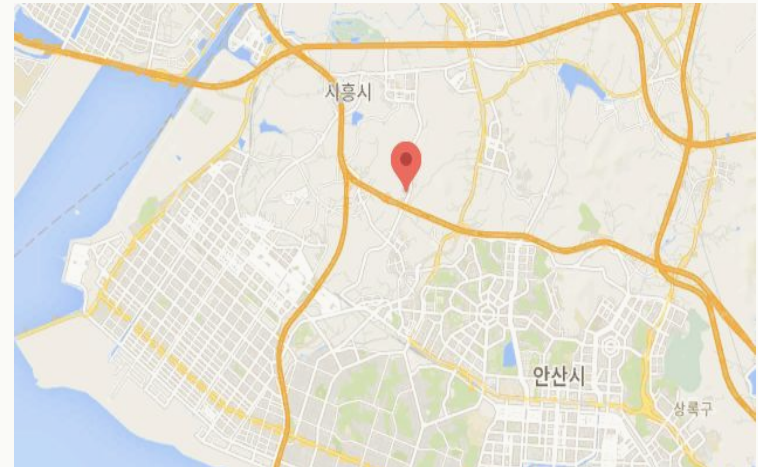
---

33, Hwanggogae-ro 327 beon-gil,  
Siheung-si, Gyeonggi-do, Republic of Korea

---

## Location

---



New plant in Siheung City, 2020

SEOUL LASH is a manufacturer of eyelash extension glues and related products with a global infrastructure



**E N D**